

# BARCELONA - FIRST FOOD BANK IN SPAIN

## (FOUNDED IN 1987, 28 YEARS AGO)

AMBIT OF OPERATION: Barcelona and its province, population 5,540,000



### 2014 Data

152,500

RECIPIENTS IN

442

CHARITY ORGANIZATIONS

219

VOLUNTEERS AND A HIRED STAFF OF

7

MANAGED

16,191

TONS OF FOODSTUFF IN 2014  
(62 TONS INCOMING AND OUTGOING PER WORKING DAY)

OF WHICH...

4,067

TONS COME FROM THE EU FUND

7,266

FOOD RECOVERY

TONS OBTAINED BY THE BANK

4,858

COLLECTIONS & DONATIONS

### EVOLUTION

	1988	...	1999	2004	2009	2014
RECIPIENTS	1,500		43,000	53,570	79,900	152,500
CHARITY ORGANIZATIONS	64		233	269	282	442
VOLUNTEERS	18		32	62	93	219
TONS (INCLUDING EU)	227		1,350	2,340	7,249	16,191

# FOODSTUFF INCOMINGS AND OUTGOINGS 2014

BASIC  
SUPPORT



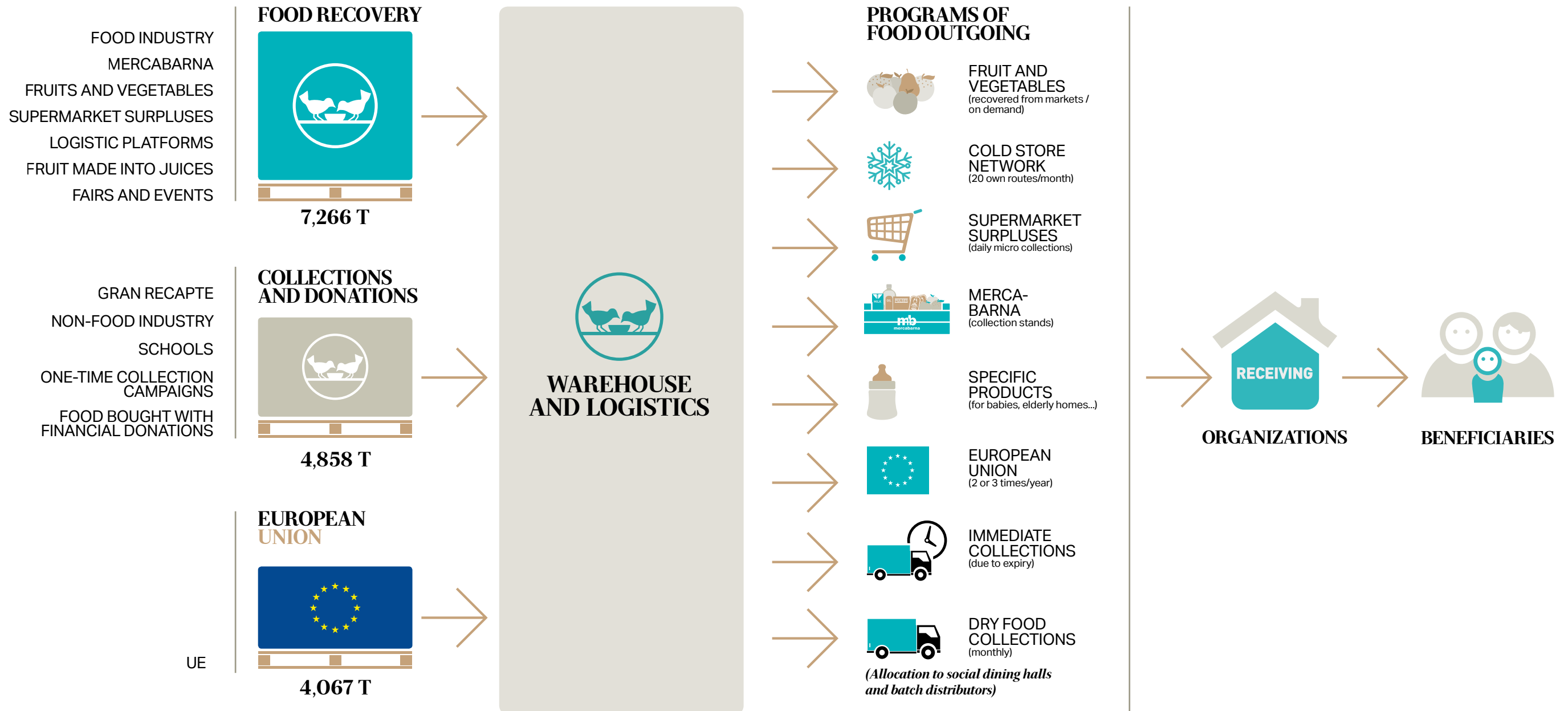
SOFTWARE



FOOD  
QUALITY



ORGANIZATIONS  
& DISTRIBUTION



MANAGEMENT  
AND SUPPORT



GRAN RECAPTE  
& CAMPAIGNS



ADMINIS-  
TRATION



COMMUNI-  
CATION



MAINTE-  
NANCE



INFORMATION  
TECHNOLOGY



REGIONAL  
REPRESENTA-  
TIVES



REPORTS  
AND STUDIES



FUNDRAIS-  
ING

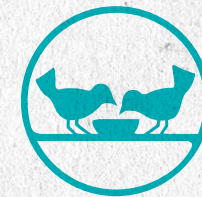


RECEPTION  
DESK



HUMAN  
RESOURCES





EACH OF THE  
**219**  
VOLUNTEERS

Is assigned to one of the incoming or outgoing channels for foodstuffs or to one of the 25 operations, support and management departments.

**219 Volunteers** make the equivalent workforce of 44 people working full-time

**Distribution software** set the amount of foodstuffs to be distributed to each receiving organization, by taking into account the following parameters:

- Number of recipients,
- Whether it is a community kitchen
- Whether only breakfast and mid-afternoon lunches are served
- Whether the recipients are given food packages
- Number of adults
- Number of children
- Number of babies
- Food-related special requirements

The **department of food safety** looks after the compliance with health laws. No expired foodstuffs are given. If past their best-before date, the supplier is required to provide an specific certificate.



The **department of distribution & relations with participating organizations** cooperates fully with the catalan government and the city councils, who refer prospective recipients.

Accompanies and advises organizations in matters such as food safety, foodstuff handling, obtaining cold storage appliances...

For efficiency, we promote co-operation between organizations.

## **MANAGEMENT & SUPPORT DEPARTMENTS:**

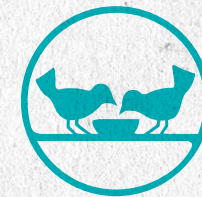
- Campaigns
- Administration
- Communication & press
- Maintenance
- Computer & information assistance
- Regional representatives
- Reports & studies
- Fundraising
- Reception desk
- Human resources

## **Food delivery programmes**

**Dry food:** the computer-assigned foodstuffs are handed out, at least, once a month. Organizations pick them up at the bank. The day before, the computer programme sends out a delivery note to let the organization know beforehand what they will be receiving.

**Cold store:** only to organizations with proper equipment. Daily delivery routes made with our own refrigerated lorry or rented van.





**Fruit and vegetables:** handed out every wednesday and friday. Organizations pick them up themselves at the bank.

**Supermarket surpluses:** about 500 supermarkets have set up a surplus collection. Each organization is assigned a supermarket, where they go every evening to collect what is available.

**Mercabarna:** bank volunteers collect foodstuffs from the stands and classify them in a warehouse. Organizations come pick them up every afternoon.

**Children:** Specific program for distributing baby food, according to the number of recipients. Collected together with the dry food distribution.

**EU:** Delivery according to a ministry-established programme. Organizations come to collect by appointment.

**Immediate collections:** unprogrammed collection, depending on the expiration date of the product. A call goes out to the organizations to come to collect asap.

.....

**FUNDING (THOUSAND EURO)**

	2004	2009	2014
Government grants	452	656	758
Donations from companies or private individuals	490	160	1,572

# LOGISTICS AND EXPENSES



**2,500 m<sup>2</sup>**  
WAREHOUSE

**400 m<sup>3</sup>**  
COLD STORAGE

**5 VANS 1 LORRY**

**FORKLIFTS AND  
PALLET TRUCKS**

**OPERATIONAL  
EXPENSES  
869,000 €**

**FOODSTUFF  
ACQUISITION  
EXPENSES  
1,451,000 €**

---

**244,000€**  
STAFF

---

**145,000€**  
IN TRANSPORTATION

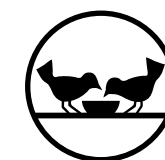
---

**145,000€**  
IN BUILDING AND VEHICLE UPKEEP

---

**95,000€**  
IN WAREHOUSE SUPPLIES

---



**FUNDACIÓ  
BANC DELS ALIMENTS**  
BARCELONA